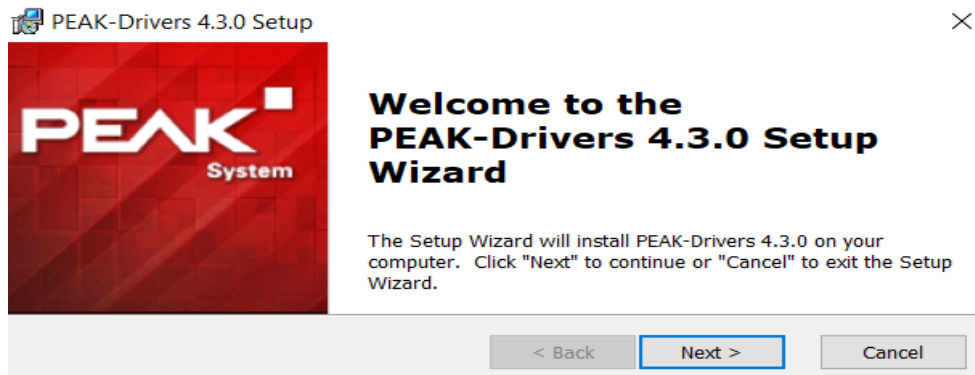


PEAK Install Instructions

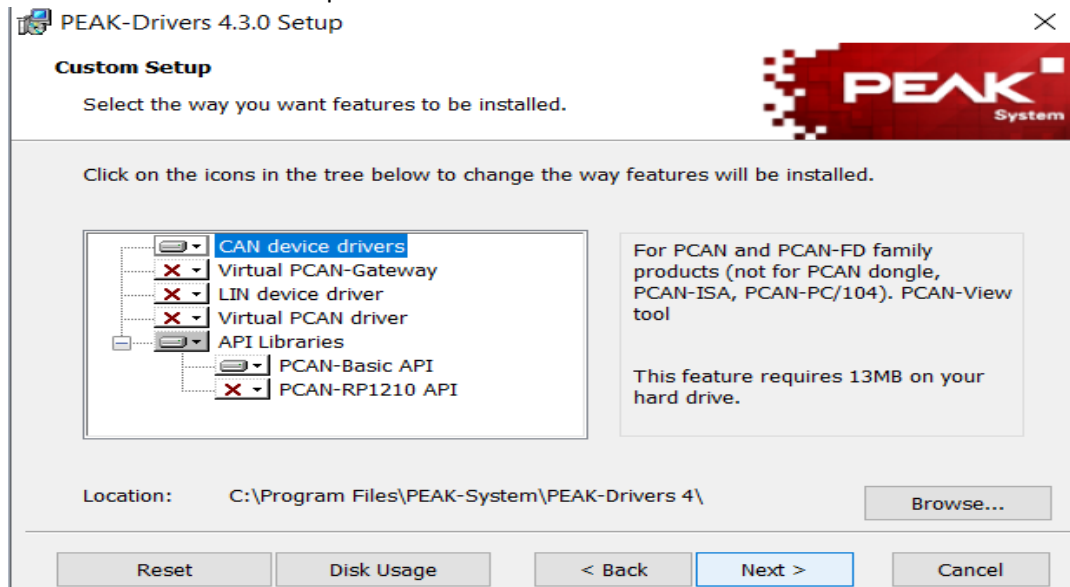
- If the installer did not automatically launch, start it manually by going to the ECU Updater folder then pcan-usb\ and double clicking PeakOemDrv.exe. Otherwise jump to Step 1.

wnloads > Sentinel_ECU_Updater_V_1_6_1 > Sentinel_ECU_Updater_V1_6_1 > ECU Updater > pcan-usb			
Name	Date modified	Type	Size
Flash_Installer	4/24/2025 4:44 PM	File folder	
PeakOemDrv.exe	4/24/2025 4:27 PM	Application	66,737 KB
winflash.ini	4/22/2025 12:34 PM	Configuration settings	5 KB

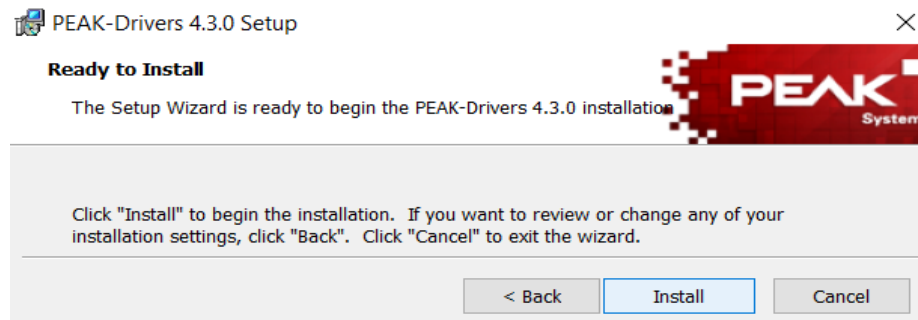
1. Click Next on the initial screen.



2. Accept the End-User License Agreement and click Next.
3. Click Next on the Custom Setup screen.



- Click Install on the next screen.



- Click Finish on the next screen.

This installation is now complete. Continue to the Flash Updater installation, if not already complete.